

PATRICK JEFFERSON



Item A POLYCHROME & *FALU*-PAINTED OVAL TILT-TOP TABLE

Date Sweden, circa 1800-1850.

Dimensions Height 28 3/4" (73cm) Width 31 1/2" (80) Depth 22 3/4" (58)

Description *The painted oval tilt-top, secured by a peg, raised on a falu-painted and grained faceted hexagonal stem on four serpentine legs, each delicately blocked-out with white lines; retaining most of the original painted decoration.*

This table is a rare survivor in the pantheon of Swedish painted vernacular furniture; the oval top painted with curved lines in blues, greens, yellow and white on a highly stylised serpentine scrolled base, decorated with *falu rödfärg* paint, the traditional deep red decoration used for the external woodwork of Swedish summer houses since the sixteenth-century.

This distinctively coloured material originated from the copper mine at Falun in Dalarna and has remained popular in Sweden due to its efficacious preservative qualities, as well as in Finland, where it's called *punamulta* (red earth). In the seventeenth-century *falu* was used to imitate red brick on formal wooden houses, its use gradually spreading out in the nineteenth-century to the countryside, where it remains popular today.

The combination of colours is curiously modern, enigmatically painted with curved lines, reflecting an abstract conception of the stark sea, sand and cloudy sky of an empty Swedish landscape, dotted with dark red summer houses.

Price £4,900

69 PIMLICO ROAD, LONDON. SW1W 8NE

TEL: +44 (0) 207 730 6161

PATRICK@PATRICKJEFFERSON.COM

A POLYCHROME & *FALU*-PAINTED OVAL TILT-TOP TABLE

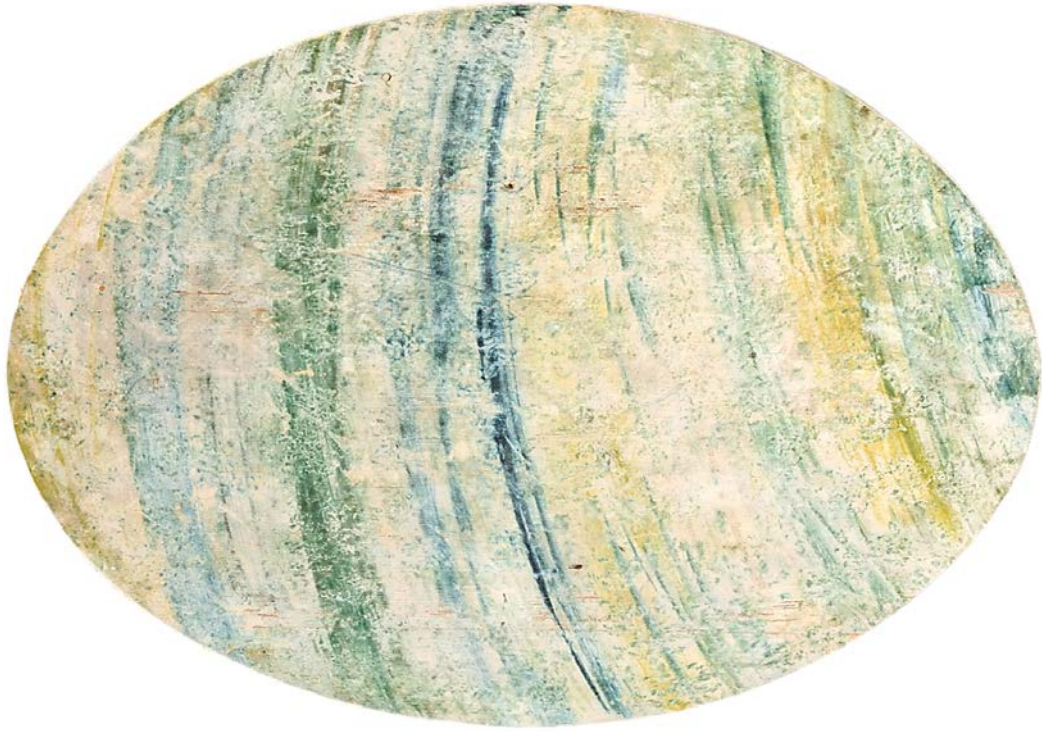


Fig. 1



Fig.2



Fig.3