

PATRICK JEFFERSON



ITEM A LARGE GILDED GREEN OPALINE GLASS TABLE LAMP BY PALMER & Co.

DATE ENGLAND, CIRCA 1845

SIGNED THE NECK STAMPED: PALMER & CO PATENT WITH THE ROYAL COAT OF ARMS

DIMENSIONS HEIGHT 23 3/4 IN (60.5) BASE 7 1/2 IN (19 CM)

DESCRIPTION *Gilded green opaline glass, gilt-lacquered brass; the decoration in very good original condition with only slight losses commensurate with age and use; previously for burning oil; suitable to be wired as a table lamp.*

This handsome and large green opaline glass table lamp, the column with sophisticated shaded and toned gilding, retains the original gilt-lacquered brass mounts decorated with Jacobethan scrolls, cartouches and arabesques. It is stamped Palmer & Co. for William Palmer the inventor of the spring-loaded candlestick, patented in 1830, who later offered a very wide range of decorative oil lamps. This example is from the same series as a column lamp advertised in *The Quarterly Literary Advertiser* of 1847, stating, 'Palmer & Co's Patent Magnum Candle Lamp. The new patterns are now ready ... They comprise a great variety of beautiful designs in richly cut and painted glass, enamel, papier mache and ormolu.'

This historicist style, known as *troubadour* in France, became fashionable again in the 1960s and 1970s when European decorators such as Renzo Mongiardino (1916-98) in Italy, Geoffrey Bennison (1921-1984) in London, and Madeleine Castaing (1894-1992) in Paris, returned to designing elaborate interiors using rich colours, materials and textures.

PRICE £2,600

69 PIMLICO ROAD, LONDON. SW1W 8NE

TEL: +44 (0) 207 730 6161

PATRICK@PATRICKJEFFERSON.COM

A LARGE GILDED GREEN OPALINE GLASS TABLE LAMP BY PALMER & Co.



Fig. 1

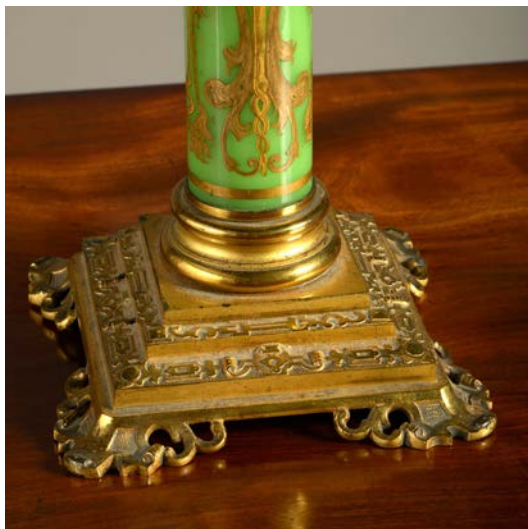


Fig.2



Fig.3