

PATRICK JEFFERSON



Item LOUIS XIV CARVED WALNUT ARMCHAIR

Date France, circa 1700.

Provenance By repute, private collection, Kent.

Dimensions Height 47" (120cm) Width 27" (69cm) Depth 31" (79cm)

Description *The carved walnut frame having a shaped upholstered back, the deeply accentuated, moulded and scrolled serpentine arms, above an upholstered seat, raised on carved, tapering gadrooned legs conjoined by a serpentine stretcher with a wrythen finial; small repairs; the removable needlework seat and back panels of later 18th century date.*

This French armchair of bold architectural form dates from the reign of the Sun King, Louis XIV, (1638-1715). The exuberantly carved solid walnut frame has been recently re-upholstered in a blue checked document fabric, sourced from Brunschwig et Fils, which is almost identical to the earlier upholstery beneath.

For a gilded example of related pattern from the collection of Antoine Perpetch, see *The World of Interiors*, July 1982, p. 116; another pair of less elaborate form were sold by the Marquess of Cholmondeley, *Houghton*, Christie's, London, 08.12.94, lot 27.

This chair is available with or without the 18th century silk and wool *gros point* and *petit point* needlework loose covers, which have been together since at least the last century. The back panel depicts a couple in courtly dress flanked by *amorini* below a *baldecchino*, flanked by flowering urns in pedestals, while the seat panel illustrates a vase of flowers in a two-handled vessel.

Price £3,900 or £4,900 with covers

69 PIMLICO ROAD, LONDON. SW1W 8NE

TEL: +44 (0) 207 730 6161

PATRICK@PATRICKJEFFERSON.COM

LOUIS XIV CARVED WALNUT ARMCHAIR

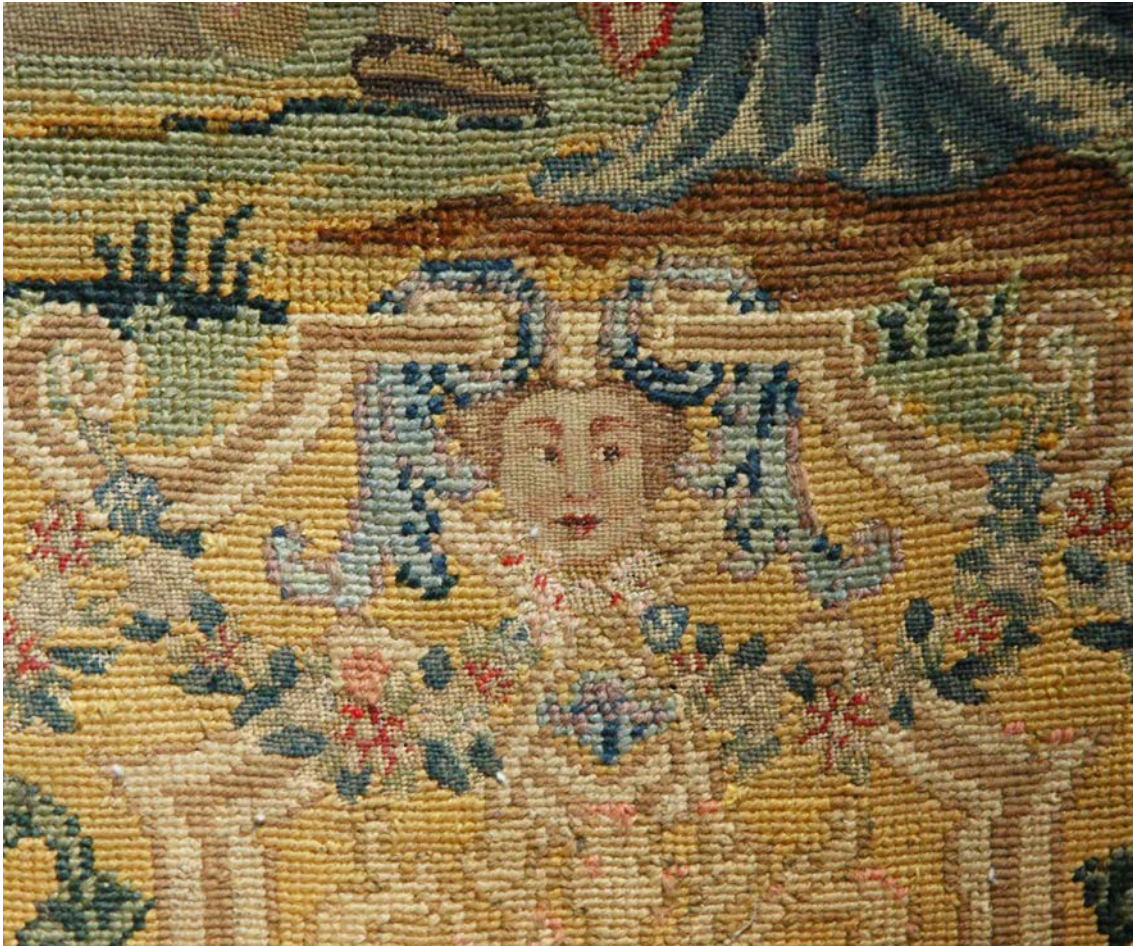


Fig. 1



Fig.2



Fig.3