

# PATRICK JEFFERSON



- Item** A MASSIVE NEOCLASSICAL SILVER-PLATED PITCHER AND BASIN
- Date** Germany, *circa* 1910.
- Stamped** An ostrich for WMF (Wurttembergische Metallwarenfabrik) and other plate marks.
- Dimensions** Pitcher 17 3/4" (45cm) Bowl 17 3/4" (45.2)
- Description** *Stamped: an Ostrich device and WMFG; N (nickel-silver); OX (oxidised); 1/0 (silver-plate thickness); N/R (date or pattern identifications); some wear to the inside of the basin where the pitcher stands but generally in very good condition.*
- In 1853, Daniel Straub, a miller from Geislingen, joined forces with the Schweizer Brothers to form the *Metallwarenfabrik Straub & Schweizer* in Geislingen; by 1862 they were awarded a gold medal at the World Exhibition in London and in 1880 the newly-named *Wurttembergische Metallwarenfabrik* employed 200 artisans, specialising in electroplate, and using a variety of newly developed hand-finishing techniques to ensure that every item appeared individually crafted. By the turn of the 19th century, under Carl Hugel, the company gained international standing and the factory employed 3,000 workers. Ten years later this had increased to 4,000, when the WMF studio was at its peak producing pieces under the direction of Albert Mayer in the *art nouveau* or *Jugendstil* manner, the style that they are inevitably primarily associated with.
- This clean-cut neo-classical pitcher and bowl is a far rarer article, that was produced in a short period of perhaps only ten years, when the company was principally supplying the French market with neo-classical pieces, reminiscent of the designs of Napoléonic goldsmiths, such as Henri Auguste (1759-1816) and Jean-Baptiste-Claude Odier (1763-1850), silversmiths to the Emperor.
- Price** £3,850

69 PIMLICO ROAD, LONDON. SW1W 8NE

TEL: +44 (0) 207 730 6161

PATRICK@PATRICKJEFFERSON.COM

A MASSIVE NEO-CLASSICAL SILVER-PLATED PITCHER AND BASIN

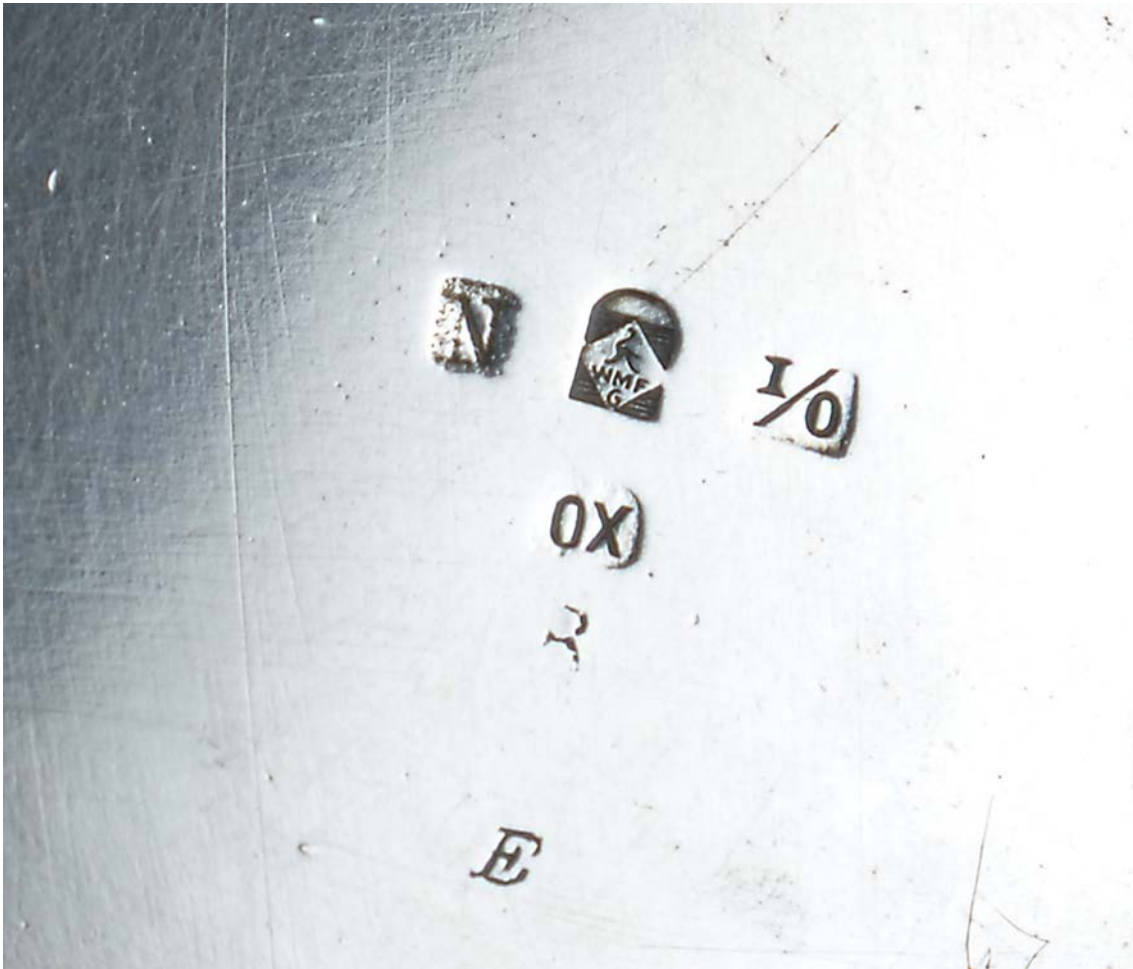


Fig. 1



Fig.2



Fig.3