

PATRICK JEFFERSON



Item PAIR OF ARTS & CRAFTS BRASS AND BLUE GLASS-MOUNTED LAMPS

Date England, or possibly Scotland, *circa* 1900.

In the manner of Albert Edward Jones.

Dimensions Height 21 2/4" (55.5) Dia 7" (18cm)

Description *The gilt-laquered brass columns, each having a tapering body, above a faceted knob, over a swept base inset with cabochon blue glass 'jewels'; areas of gilt-lacquer worn; small areas of verdigris.*

This unusual pair of Arts & Crafts lamp bases are designed in a historicist manner and appear to derive their iconography from a mediaeval mace, indicated by the ridged and shaped bodies.

There is little to suggest a designer although the form is reminiscent of several pieces by the silversmith Albert Edward Jones (1878-1954); alternatively these lamps could be Scottish, given the resurgence of mediaeval patterns in architecture, furniture and metalware at various times throughout the 19th century.

Price £5,900

69 PIMLICO ROAD, LONDON. SW1W 8NE

TEL: +44 (0) 207 730 6161

PATRICK@PATRICKJEFFERSON.COM

PAIR OF ARTS & CRAFTS BRASS LAMPS

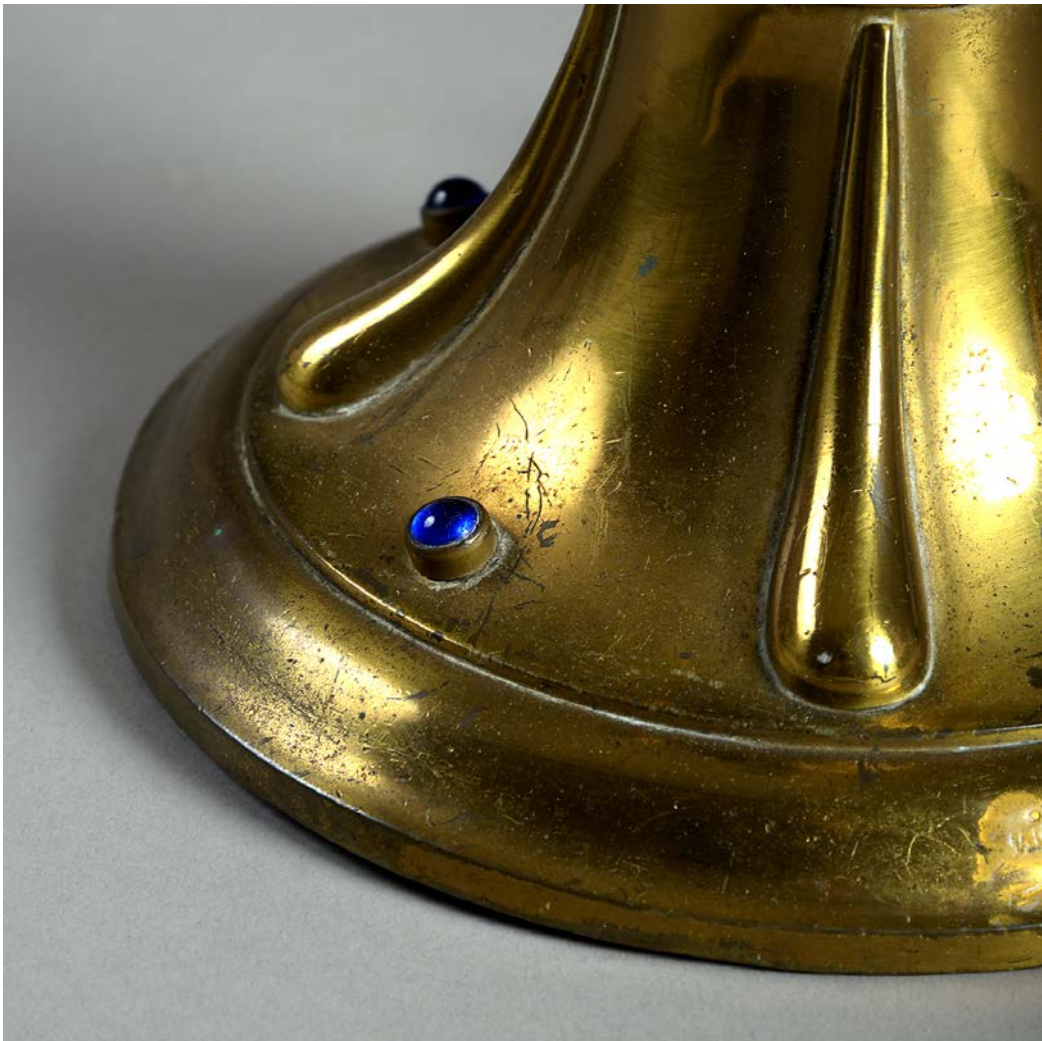


Fig. 1



Fig.2



Fig.3