

PATRICK JEFFERSON



Item PAIR OF IRISH GEORGE IV CARVED ROSEWOOD UPHOLSTERED LIBRARY ARMCHAIRS

Date Attributed to Williams & Gibton, Dublin, circa 1825-30.

Provenance Palmerstown House, Co. Kildare, possibly by descent from the 4th Earl of Mayo.

Dimensions Height 41 1/2" (105) Width 23 5/8" (60cm) Depth 32 3/4" (83)

Description *Each over-srolled high-back above a deeply swept seat, with down-scrolling leaf-carved arms, raised on acanthus-carved fluted front legs with brass-capped castors; one leg with a small replaced section in grained walnut; traditionally reupholstered in hand-stitched horsehair and covered with striped French silk and bespoke passementerie to match; in excellent, original condition throughout.*

This pair of supremely comfortable armchairs came from Palmerstown House, Johnstown, Co. Kildare, seat of the Earls of Mayo, and may have formed part of the furnishings commissioned from 1807 by John Bourke, 4th Earl. Their distinctive design, notably the vivaciously raked backs, follows examples by Gillows, who supplied a similar 'Spanish' chair in 1823; a similar model was illustrated by Loudon in 1839 and another, attributed to Arthur Jones, is at Malahide Castle.

Dr. Angela Alexander has attributed these chairs to Williams & Gibton, comparing them to a set previously at Lissadell, Ballinfull, Co. Sligo, that were not included in the house sale of the majority of the contents. Other unsigned pieces with the same supportable attribution have come from the same source, the last major and, until that point, uniquely undisturbed Williams & Gibton commission.

A fascinating aside is their remarkable similarity to a pair of chairs in the Tented Room at Schloss Charlottenhof, Sanssouci, Potsdam, designed by Karl Friedrich Schinkel, around 1815 for Crown Prince Frederick William, later King, of Prussia.³

Price £27,000

69 PIMLICO ROAD, LONDON. SW1W 8NE

TEL: +44 (0) 207 730 6161

PATRICK@PATRICKJEFFERSON.COM

PAIR OF IRISH GEORGE IV CARVED ROSEWOOD UPHOLSTERED LIBRARY ARMCHAIRS



Fig. 1

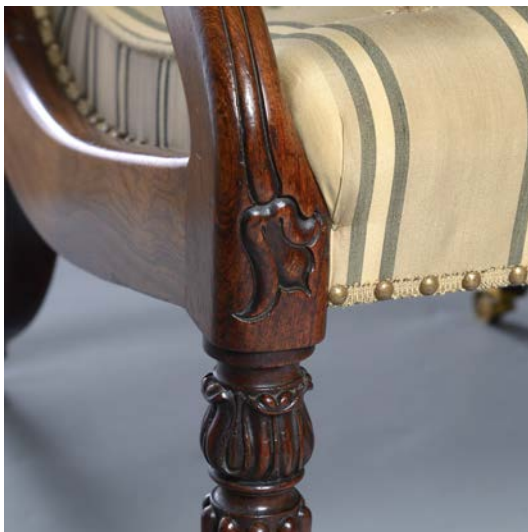


Fig.2



Fig.3