

# PATRICK JEFFERSON



**Item** PAIR OF IRISH GEORGE IV CARVED ROSEWOOD UPHOLSTERED LIBRARY ARMCHAIRS

**Date** Attributed to Williams & Gibton, Dublin, circa 1825-30.

**Provenance** Palmerstown House, Co. Kildare, possibly by descent from the 4th Earl of Mayo.

**Dimensions** Height 41 1/2" (105) Width 23 5/8" (60cm) Depth 32 3/4" (83)

**Description** *Each over-srolled high-back above a deeply swept seat, with down-scrolling leaf-carved arms, raised on acanthus-carved fluted front legs with brass-capped castors; one leg with a small replaced section in grained walnut; traditionally reupholstered in hand-stitched horsehair and covered with striped French silk and bespoke passementerie to match; in excellent, original condition throughout.*

This pair of supremely comfortable armchairs came from Palmerstown House, Johnstown, Co. Kildare, seat of the Earls of Mayo, and thus may conceivably have formed part of the furnishings commissioned from 1807 by John Bourke, 4<sup>th</sup> Earl. Their distinctive design, notably the vivaciously raked backs, follows examples by Gillows, who supplied a similar 'Spanish' chair in their *Estimate Sketch Book*, dated 25<sup>th</sup> October 1823. A related version was illustrated by John Claudius Loudon, *Encyclopaedia of Cottage Farm and Villa Architecture and Furniture*, fig. 1911, in 1839 and another is illustrated G. Kenyon, *The Irish Furniture at Maslahide Castle*, pp. 82-3, which the author attributes to Arthur Jones & Co..

Dr. Angela Alexander has attributed these chairs to Williams & Gibton, comparing them to a set previously at Lissadell, Ballinfull, Co. Sligo, which were not included in the house sale of the majority of the contents. Other unsigned pieces with the same supportable attribution have come from the same source, the last major and, until that point, uniquely undisturbed Williams & Gibton commission.

**Price** £27,000

69 PIMLICO ROAD, LONDON. SW1W 8NE

TEL: +44 (0) 207 730 6161

PATRICK@PATRICKJEFFERSON.COM

PAIR OF IRISH GEORGE IV CARVED ROSEWOOD UPHOLSTERED LIBRARY ARMCHAIRS



Fig. 1

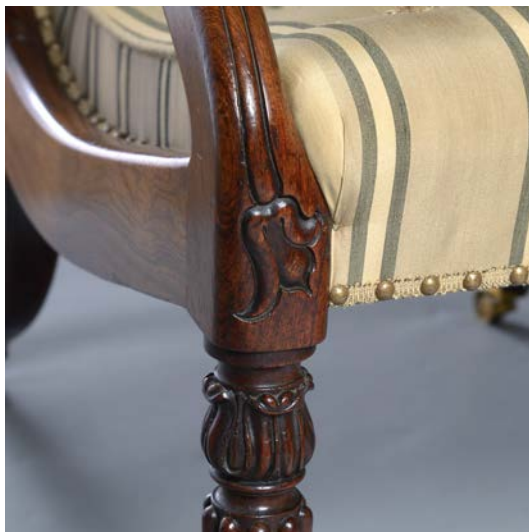


Fig.2



Fig.3