

# PATRICK JEFFERSON



- Item** PORTRAIT OF A *GAMINE*
- Date** Probably French, *circa* 1920s- 1930s.
- Provenance** Private French collection, London.
- Dimensions** Height 23" (58.5cm) Width 18" (46cm) Sight 15 3/4" x 10"
- Description** *Oil on canvas, the reverse stencilled GA445/6A445 and 6; the silver-gilt frame possibly the original, with a label for Les Cadres Modernes Paul Rene 82 bis Boulevard du Montparnasse Paris.*
- Research has, so far, established little about this beautifully observed and fluently painted oil sketch, which is likely to be French. Her *gamine* - urchine or waif - haircut is shorter and more natural than the favoured "Dutch' or Page-boy bob', the heavily pomaded 'Eton crop' worn by the dancer Josephine Baker or the earlier look of short hair, worn with short skirts, started several decades earlier by the French singer and actress Polaire (Émilie Marie Bouchaud, 1874-1939).
- The label of the frame maker, Paul Rene<sup>3</sup> is recorded on a frame containing a painting of the Observatoire, Paris, by Germaine Foury, dated 1932, in the French National Collection (FNAC 12710). The two-coloured silvered-gilding is a fashion that was prevalent in the 1920s-1930s and likely to be the original.
- This enigmatic painting has been in private French collection in London for at least the last forty years. Christie's have confirmed that although the stencilled number<sup>2</sup> on the reverse appears to be one of their sequences, this painting is not recorded as having passed through any auction, so may have been consigned then withdrawn before a sale.
- Price** £3,500

69 PIMLICO ROAD, LONDON. SW1W 8NE

TEL: +44 (0) 207 730 6161

PATRICK@PATRICKJEFFERSON.COM

PORTRAIT OF A GAMINE

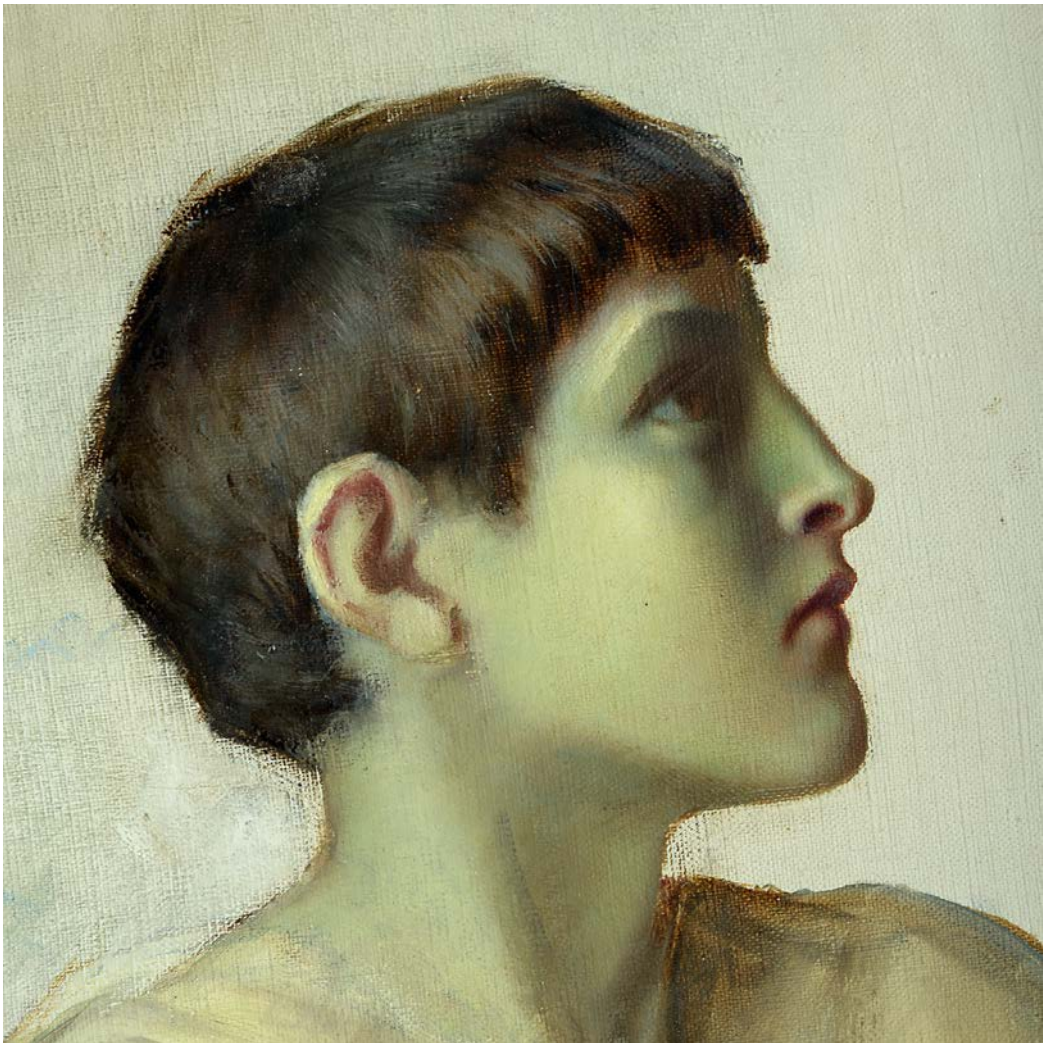


Fig. 1



Fig.2



Fig.3