

PATRICK JEFFERSON



Item RARE HARDSTONE MANTEL CLOCK SURMOUNTED BY EUROPA & THE BULL

Date Cast by a Viennese foundry, circa 1900, after the model by Hans Müller.

Provenance Private collection, Hampstead, London.

Dimensions Height 17" (43cm) Width 10" (25.5cm) Depth 4 3/4" (12)

Description *The sculpture cast in black patinated bronze and inscribed H. Müller, supported on a gilt-metal mounted solid specimen marble clock, having an 8 day striking movement with an enamelled dial painted with Roman numerals; raised on gilt-metal-mounted bronze feet; in good condition commensurate with age and use; the movement will be cleaned and guaranteed for a year.*

This handsome solid marble-cased mantel clock, possibly a *Brèche violette*, is mounted with crisply-cast running laurel borders in Louis XVI taste, epitomising the *fin de siècle* revival for neoclassical designs, such as the clocks produced by Cartier, Fabergé and Tiffany, as well as Austrian workshops, who used hardstones cut in Idar-Oberstein in the Hunsrück Mountains of south west Germany.

The Greek mythological subject of Europa and the Bull appears as sculpture and on vase decoration and is first referred to in the *Illiad*. This bronze, *Europa auf dem Stier*, is inscribed Hans Müller (1873-1937), who was born in Vienna, Austria, and studied under the sculptor Edmund Hellmer at the Vienna Academy of Art. Although known for his portrait busts of historical figures and Viennese society, Müller also produced bronzes of animals, often presented on very high quality specimen marble plinths. The most extensive collection of Müller's work is on permanent display at the Simu Museum, Bucharest but although identical bronze casts are known, no comparable clock exists which suggests a special commission.

Price £8,500

69 PIMLICO ROAD, LONDON. SW1W 8NE

TEL: +44 (0) 207 730 6161

PATRICK@PATRICKJEFFERSON.COM

RARE HARDSTONE MANTEL CLOCK SURMOUNTED BY EUROPA & THE BULL



Fig. 1



Fig.2

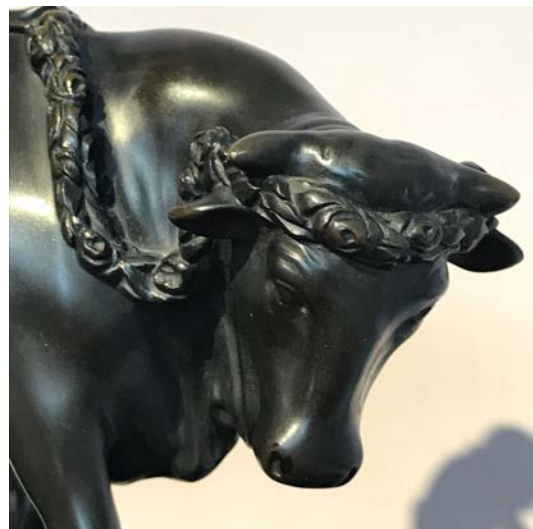


Fig.3